

DESIGNER & MANUFACTURER

CCM
MATÉRIELS D'EMBALLAGE
FOOD PROCESSING

WE'VE GOT QUALITY
ALL WRAPPED UP



www.ccm-emballage.com

Based in the Lyon region for over 30 years, CCM designs and manufactures packaging equipment for three main markets:

- Food processing
- Industry
- Hygiene

CCM has a **network of authorised distributors** offering unbeatable service and coverage across France.

We are also **present internationally**, especially in the main European countries.

CCM has an **installed base of over 50,000 machines**.

CCM concepts

CCM produces over 3,000 machines each year, backed by **numerous innovative concepts and patents**. Our products have acquired a reputation for their outstanding reliability.

Our design office has the experience needed to explore custom adaptations so as to handle **new packaging concepts and integrate new materials**.



CCM undertakings

• Quality

All our machines undergo strict quality control checks before leaving the workshop, and comply with current standards.

• A sales force tailored to your needs

We have specialised sales teams for each market, who are on hand to provide technical advice as your needs evolve.

Truly professional advice:

welcoming, responsive and competent.

• Delivery

We always have around **200 machines in stock** to ensure prompt delivery.

• **Our after sales service** guarantees a timely response and offers optimal follow-up of your equipment.

• **An exhibition hall** is at your disposal to put our machines through their paces and conduct packaging trials.



TRAY SEALER **BARQ'150**

INNOVATIVE, PATENTED DESIGN

Designed specifically for sealing food trays from 180 g to 2 kg.

- Food-grade stainless steel
- Largest format: 195 x 160 mm
- Features two gas cylinders
- Electronic temperature control
- Features roll holder and cutting system
- Supplied with patented adjustable die for large (195 x 140 mm) and small (140 x 96 mm) trays
- Custom die available as an option
- Maximum film width: 150 mm
- Maximum roll diameter: 200 mm
- Installed power: 350 W
- Voltage: 220 V single-phase
- Dimensions at rear: 490 x 210 x H 230 mm
- Weight: 12 kg



BARQ'150

TRAY SEALER **BARQ'260**

MANUAL CPET- 1/4 GN

For manual sealing of trays used in institutional kitchens, restaurants and delicatessen counters.

- Food-grade stainless steel
- Largest format: 265 x 190 mm
- Features two gas cylinders
- Electronic temperature control from 120 to 200°C
- Maximum film width: 210 mm
- Maximum roll diameter: 200 mm
- Supplied with one standard die
- Custom die available as an option
- Power rating: 500 W
- Voltage: 220 V single-phase
- Overall dimensions: 300 x 600 x H 550 mm (open)
- Weight: 17 kg

HEAT SEALER **BARQ'325**

MANUAL - LARGE FORMAT

Tray sealer suitable for small and medium-scale runs in institutional and food-service kitchens.

- Food-grade stainless steel
- Largest format: 325 x 265 mm (1/2 GN)
- Features two gas cylinders
- Electronic temperature control, from 0 to 200°C
- Maximum film width: 350 mm
- Maximum roll diameter: 300 mm
- Power rating: 1200 W
- Voltage: 220 V single-phase
- Overall dimensions: 725 x 470 x H 410 mm
- Weight: 45 kg



BARQ'260



BARQ'325

TRAY SEALERS **BARQ'400**

SEMI-AUTOMATIC

Semi-automatic machine with drawer for sealing of trays and pots.

- Food-grade stainless steel and aluminium
- Largest format:
 - BARQ'400 P: 420 x 290 x H 115 mm
 - BARQ'400 E: 420 x 295 x H 150 mm
- This machine can be used with multi-indentation dies
- Changing format is very straightforward
- Electronic temperature control, from 0 to 200°C
- Sealing time adjustable with electronic controller
- Automatic lowering of sealing head
- Optional lengthwise cutting
- Sealing pressure applied by pneumatic cylinder (400 P)
- Sealing pressure applied by electric cylinder (400 E)
- Maximum film width: 420 mm
- Maximum roll diameter: 250 mm
- Compressed air: service pressure 6 bar
- Power rating: 1200 W (400 P) / 1350 W (400 E)
- Voltage: 220 V single-phase
- Overall dimensions:
 - BARQ'400 P: 550 x 800 x H 430 mm
 - BARQ'400 E: 650 x 750 x H 570 mm
- Weight: 39 kg (400 P) / 53 kg (400 E)

THROUGHPUT

In optimum use, this machine can perform up to ten sealing cycles per minute.



BARQ'400 P



BARQ'400 E

Semi-automatic tray sealers with vacuum and gas

VACUUM AND GAS TRAY SEALER

MINI OVG 6



Semi-automatic with vacuum and gas reinjection - tabletop with or without tray edge cutting

- Pneumatic cylinder
- Heating head without cutting (as standard)
- Quick and easy change of die
- Five stored programs
- Largest format: 270 x 180 x H 85 mm
- Stainless steel and aluminium construction
- Stainless steel bowl
- Maximum film width: 290 mm

OPTIONS

- Standard tooling with tray edge cutting
- Air compressor (40 dB)
- Stainless steel base

Model	Width	Depth	Height	Vacuum pump	Cycle	Voltage	Power	Weight
MINI OVG 6	440 mm	700 mm	650 mm	6 m ³ /h	2/min	230 V	1.5 kW	64 kg

VACUUM AND GAS TRAY SEALERS

BARQ'OVG 40 and 220



Semi-automatic with vacuum and gas reinjection - on rack

- Pneumatic cylinders for tray edge cutting
- Quick and easy change of tooling
- Largest format: 360 x 280 x H 115 mm
- Five stored programs
- Stainless steel and aluminium construction
- Stamped stainless steel bowl
- Maximum film width: 410 mm

OPTIONS

- Air compressor (40 dB)
- Multi-step vacuum for fragile products
- Two-hand control for trolley automation
- Automatic film waste recovery

Model	Width	Depth	Height	Vacuum pump	Cycle	Voltage	Power	Weight
BARQ'OVG 40	600 mm	900 mm	1270 mm	40 m ³ /h	2 to 3/min	400 V 3ph+N+E	3.1 kW	145 kg
BARQ'OVG 220	600 mm	900 mm	1270 mm	20 m ³ /h	2/min	230 V	2.2 kW	140 kg

OVG die



MINI OVG 6



Automatic film waste recovery
BARQ'OVG

BARQ'OVG 40
BARQ'OVG 220



IDEAL FOR PRESERVATION

Semi-automatic machines for sealing various types of plastics tray with (or without) vacuum and reinjection of inert gas

APPLICATIONS

- Caterers
- Salting
- Processed food industries
- Fishmongers

PAPER SEALER

SP 352

Sealer for heat-sealable paper and laminated aluminium foil

Machine designed for packaging products that must be tightly sealed.

Applications: cooked or cold meats, fish, cheeses, etc.

- Illuminated on/off switch with watertight cap
- IP65 protection for control unit
- Food-grade stainless steel
- Power rating: 0.15 kW
- Voltage: 230 V single-phase
- Weight: 8.5 kg

ADVANTAGES

- Highly reliable heating element
- Wide seals ensure leaktight packaging
- Work surface with surround for effortless cleaning
- Protective trims

ACCESSORIES

- Simple, functional, counter-top or wall-mounted roll holders
- Stainless steel table with roll holder built-in TSP352
- Stainless steel stand and roll holder SP35210

Model	Capacity	Dimensions
SP 352	300 × 250 mm	W 330 × D 400 × H 390 mm

Accessories	Capacity	Dimensions
TSP352	370 mm	W 527 × D 530 × H 821 mm
SP35210	370 mm	W 404 × D 450 × H 360 mm

SEALER

CSP 300

Paper or plastic bag sealer

This all-stainless steel pulse bag sealer enables you to seal bags quickly WHILE HOLDING BAGS IN BOTH HANDS.

APPLICATIONS

- Plastic bags
 - Heat-sealable paper bags for cooked fish and poultry
- May be wall mounted for use as a versatile VERTICAL SEALER.
- Installed power: 450 W
 - Voltage: 220 V single-phase
 - Overall dimensions: 380 × 320 × H 130 mm
 - Weight: 7.5 kg
 - Sealing capacity: 300 mm
 - Seal width: 2 or 5 mm
 - Pulse sealing
 - Maximum thickness sealed: 2 × 150 µm

SP 352



SP35210



TSP352



CSP 300



Work surfaces and tables for cling film food wrapping

STAINLESS STEEL HEATED TABLES AND TOPS FOR CLING FILM

PFE

Equipment for wrapping trays of food with cling film.

Numerous applications: fruit and vegetables, cheese, meat, delicatessen, poultry, etc.

- Made from food-grade stainless steel
- Non-stick cutting and sealing part (patented system)
- Compliant with health and safety regulations (no chlorine fumes)
- Removable work surface for extending film
- Roll brake system

TABLETOP MODELS

Model	Roll	Cutting width	Dimensions (mm)	Top surface (mm)
PFE 11	1	630 mm	650 × 650 × 130	Removable: 630 × 195
PFE 44	1	500 mm	530 × 460 × 275	Fixed: 530 × 220

FREE-STANDING MODELS

Model	Roll	Cutting width	Dimensions (mm)	Top surface (mm)
S 32	2	600 mm	690 × 960 × 640	Removable: 690 × 410
S 33	3	600 mm	690 × 960 × 640	Removable: 690 × 410
PFE 12 P	1	750 mm	785 × 755 × 945	Removable: 785 × 440

Power rating: 0.36 kW / Voltage: 220 V except for model PFE 12 P: 0.4 kW / 220

CLING FILM ROLL HOLDERS

SELF EMBAL and LSI

- Maximum film width: 460 mm
- Film guided by centring rings on rollers
- Protected cutting blade

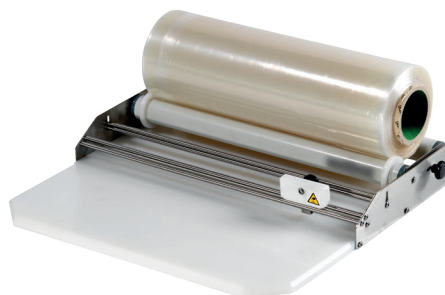
- Stainless steel with food-grade polyethylene cutting and packing surface
- Overall dimensions: 520 × 500 × H 80 mm

- Also available as fully stainless steel version without polyethylene plate
 - LSI 460: Maximum film width 460 mm
 - LSI 600: Maximum film width 600 mm

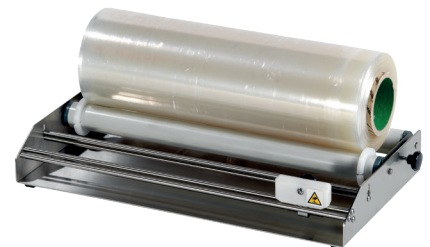
PFE 44



SELF EMBAL



LSI 460
LSI 600



PFE 11



S 32



SEALERS

FCVE

EXTERNAL SUCTION

All models feature a fully automatic cycle: suction, sealing and cover raising.

- All stainless steel
- Electronic circuit board
- Adjustable sealing time
- VAS system (Automatic Vacuum System)
- Use only with corrugated paper bags

SEALER

FCVE 300 S

- Sealing bar: 300 mm
- Dry vacuum pump: 0.6 m³/h
- Power rating: 80 W
- Voltage: 230 V single-phase
- Overall dimensions: 350 x 315 x H 110 mm
- Weight: 8 kg

SEALER

FCVE 420 S

- Sealing bar: 420 mm
- Dry vacuum pump: 0.9 m³/h
- Power rating: 200 W
- Voltage: 230 V single-phase
- Overall dimensions: 470 x 315 x H 190 mm
- Weight: 10 kg

SEALER

FCVE 420 H4

- Sealing bar: 420 mm
- Oil pump: 4 m³/h
- Power rating: 200 W
- Voltage: 230 V single-phase
- Overall dimensions: 470 x 315 x H 190 mm
- Weight: 14 kg




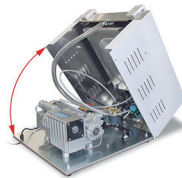
FCVE

VACUUM SEALERS

BORA

CHARACTERISTICS

- Busch pump 
- Digital control with six programs
- SoftAir: gradual venting to atmospheric pressure (fragile products)
- Vacuum pump dehumidification system
- Removable sealing bar mounted on pistons
- Vacuum time management
- Stainless steel bowl with rounded edges for easier cleaning
- Bell housing closer
- Convex cover (except BORA 300/F)
- Polyethylene alignment plates



BORA tabletop

Housing opens up to 90° for easier cleaning and servicing

OPTIONS

- Gas injection system
- Inclined surface
- Double-height tank for liquids
- Sealing bar with cutter
- Sealing bar with double heating elements



7

VACUUM SEALER WITH PRINTER

BORA 415/IMP

CHARACTERISTICS

- Sealing bar: 415 mm
- Vacuum pump: 25 m³/h
- Chamber dimensions (mm): 422 x 503 x H 220
- Overall dimensions (mm): 490 x 650 x H 390
- Maximum bag dimensions (mm): 400 x 500
- Voltage: 230 V/50 Hz
- Power rating: 1100 W - 72 kg
- Printer for HACCP labelling
- Inert gas injection and softAir system as standard



CONTROL PANEL CHARACTERISTICS

- 30 programs with settings for % vacuum, % gas, sealing time, product name, best before date
- Batch and traceability display
- Management of five different operators
- Automatic pump servicing warning
- Automatic label printing at the end of the cycle

Range of manual sealers for small and medium runs

SEALERS WITHOUT SLIDE CUTTER

SM

MODEL	SM 200	SM 300	SM 400	SM 500
Sealing bar	200 mm	300 mm	400 mm	500 mm
Max. thickness	2 × 150 µm	2 × 150 µm	2 × 150 µm	2 × 150 µm
Seal width	2 mm	2 mm	2 mm	2 mm
Power rating	0.35 kW	0.50 kW	0.75 kW	0.80 kW
Weight	3.6 kg	5 kg	5.8 kg	7.6 kg
Voltage	230 V	230 V	230 V	230 V

WITH SLIDE CUTTER...

SM

MODEL	SM 200 C	SM 300 C SM 300 C INOX	SM 400 C SM 400 C INOX	SM 500 C SM 500 C INOX
Sealing bar	200 mm	300 mm	400 mm	500 mm
Max. thickness	2 × 150 µm	2 × 150 µm	2 × 150 µm	2 × 150 µm
Seal width	2 mm	2 mm	2 mm	2 mm
Power rating	0.35 kW	0.50 kW	0.75 kW	0.85 kW
Weight	4.5 kg	5.4 kg / 5.7 kg	6.2 kg / 6.7 kg	6.5 kg / 7.7 kg
Voltage	230 V	230 V	230 V	230 V

...AND MAGNETIC LOCKING

SM

MODEL	SM 300 CV	SM 400 CV
Sealing bar	300 mm	400 mm
Max. thickness	2 × 150 µm	2 × 150 µm
Seal width	2 mm	2 mm
Power rating	0.5 kW	0.75 kW
Weight	5.8 kg	7.3 kg
Voltage	230 V	230 V

ACCESSORIES

- Work surfaces
- Roll holders

MEDICAL SEALERS

SM

- Sealers for thick plastic and Tyvek bags
- Audible warning at end of cycle
- Seal width: 10 mm
- Visible indication of sealing

MODEL	SM 2010 C	SM 3010 C
Sealing bar	200 mm	300 mm
Max. thickness	2 × 250 µm	2 × 250 µm
Seal width	10 mm	10 mm
Power rating	1.00 kW	1.20 kW
Weight	6.4 kg	8 kg
Voltage	230 V	230 V

LARGE FORMAT SEALERS

SMP

MODEL	SMP 600	SMP 800	SMP 1000
Sealing capacity	600 mm	800 mm	1000 mm
Max. thickness	2 × 150 µm	2 × 150 µm	2 × 150 µm
Seal width	2 mm	2 mm	2 mm
Power rating	800 W	1000 W	1000 W
Weight	7.8 kg	10 kg	11 kg
Voltage	230 V	230 V	230 V

SMP CHARACTERISTICS

- Adjustable sealing time
- No slide cutter
- Round wire option (seals and cuts)

8



SM



SMP



SM stainless steel
with slide cutter



SM
with work
surface and
dispenser

SFNG MANUAL

ARTICLE CODE	SEALING CAPACITY
SFNG 500 M	500 mm

AUDIBLE SIGNAL

Adjustable sealing time

- Sealing arm lowered manually
- Audible signal during sealing and cooling

SFNG SEMI-AUTOMATIC

ARTICLE CODE	SEALING CAPACITY
SFNG 300 V	300 mm
SFNG 500 V	500 mm
SFNG 800 V	800 mm

MAGNETIC LOCKING

Adjustable sealing and closing times

- An electromagnet holds the arm down while sealing occurs
- Automatic arm return

ADVANTAGES

- Improved productivity
- Reduced fatigue
- Guarantee of constant sealing pressure

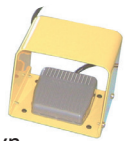
SFNG AUTOMATIC

ARTICLE CODE	SEALING CAPACITY
SFNG 300 P	300 mm
SFNG 500 P	500 mm
SFNG 800 P	800 mm

PNEUMATIC CYLINDER

Adjustable sealing time
Supply pressure: 6 bar

- Supplied with foot control
- Simply press the pedal to lower the sealing arm
- A cylinder holds the arm down for sealing and cooling
- Automatic arm return



ADVANTAGES

- Ease of use
- Improved productivity
- Guarantee of sufficient sealing pressure

SFNG

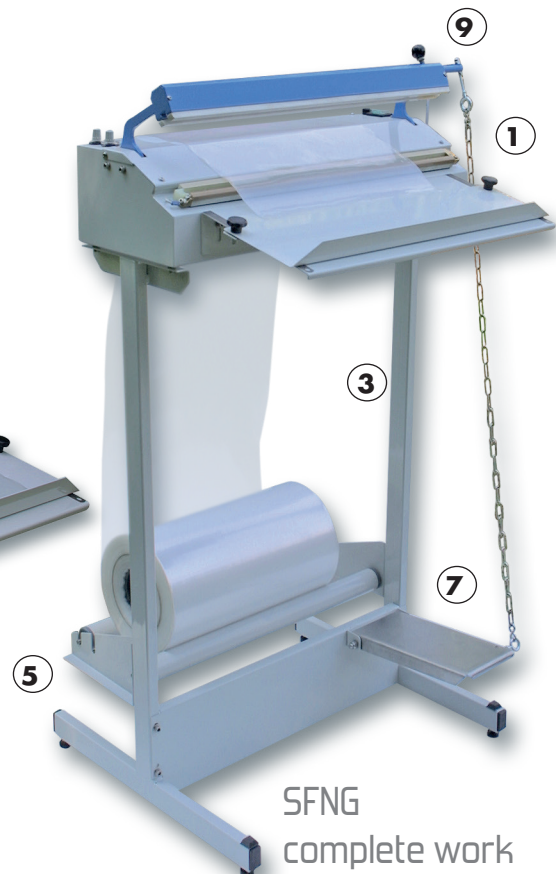


SFNG with work surface and dispenser



6

9



SFNG complete workstation

- Complete range of impulse sealers used for forming and sealing plastic and laminated bags
- Three sealing widths available: 300 mm, 500 mm and 800 mm
- Three closing systems:
 - Manual
 - Magnetic locking
 - Pneumatic
- Sealers feature a slide cutter for working with bags or sleeves

BAGGING MACHINES

ESNG

Bagging machines for series of parts to be grouped in bags
Uses sleeves stored on a tube
Features double sealing mechanism and slide cutter.

The thinner the film, the longer the length that can be stored on the tube (maximum 20 metres for 50 µm film).

BAGGING MACHINES WITH MAGNETIC LOCKING

ARTICLE CODE	ESNG 300 V	ESNG 500 V
Sealing capacity	300 mm	500 mm

- An electromagnet holds the arm down while sealing occurs
- Automatic arm return

ADVANTAGES

- Improved productivity
- Reduced fatigue
- Guarantee of constant sealing pressure

PNEUMATIC BAGGING MACHINES

ARTICLE CODE	ESNG 300 P	ESNG 500 P	ESNG 800 P
Sealing capacity	300 mm	500 mm	800 mm

- Operating pressure: 6 bar
- Supplied with foot control
- Simply press the pedal to lower the sealing arm
- A cylinder holds the arm down for sealing and cooling
- Automatic arm return

ADVANTAGES

- Ease of use
- Improved productivity without fatigue
- Guarantee of sufficient sealing pressure

CHARACTERISTICS

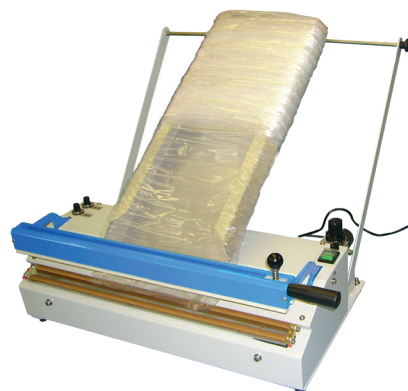
SFNG and ESNG

- Maximum throughput: 8 to 10 cycles per minute
 - Seal width: 2 mm
 - Maximum film thickness: 2 × 150 µm (enquire regarding thicker films)
 - Sealing bar featuring tensioner to reduce the risk of breaking the heating elements, and to ensure even sealing
 - Electronic sealing control: automatically adjusts sealing settings depending on throughput
 - Arm return cylinder
 - Weight (without accessories) from 9 to 20 kg depending on model
 - Voltage: 230 V
 - Overall dimensions:
 - Depth: 230 mm
 - Height: 300 mm arms open
- Width:
- machines with 300 mm seal width: 400 mm
 - machines with 500 mm seal width: 600 mm
 - machines with 800 mm seal width: 900 mm

10

ESNG complete work station

ESNG 500 P



tabletop



- 1 Work surface with adjustable stop and rules
- 2 Multi-position stand with adjustable height and tilt
- 3 Fixed stand
- 4 Tabletop dispenser
- 5 Roll holder on stand
- 6 Film press
- 7 Mechanical foot control
- 8 Four casters
- 9 Slide cutter

CONTINUOUS SEALERS

SC 802 V VERTICAL / SC 802 H HORIZONTAL

Bag sealing equipment for food and other products:

- PE, PP, PVC, PA/PE and other plastic bags
- Laminated aluminium bags
- Heat-sealable Kraft paper bags
- Plastic bags with heat-sealable cardboard riders

Adjustable heating temperature and conveyor speed for sustained throughput (up to 1,600 bags/hour)

Digital control panel with 6 stored programs

10 mm seal width for a perfect seal

Max. bag height 300 mm for SC 802 Vertical

330 mm height extender available as an option

CHARACTERISTICS

- Adjustable conveyor speed: up to 10 m/min
- Maximum throughput: 1600 bags/hour
- Temperature adjustable from 0 to 300°C
- Adjustable conveyor height and depth
- Conveyor dimensions: 900 x 150 mm
- Max. load: 5 kg
- Power rating: 0.5 kW
- Voltage: 230 V / 50 Hz
- Overall dimensions:
 - SC 802 V with 150 mm conveyor: 920 x 380 x H 550 mm
 - SC 802 H with 150 mm conveyor: 920 x 420 x H 320 mm
- Weight:
 - SC 802 V: 31 kg
 - SC 802 H: 26 kg

ACCESSORIES

- Stainless steel table stand with casters
- Printing system
- 900 x 300 mm conveyor belt
- Three or five digit counter
- Four heating modules



SC 802 V



SC 802 H

BAG SEALING SOLUTIONS ...

AUTOMATIC SEALERS

SA

- Featuring foot control to trigger the sealing cycle
- Sequenced cycles can be programmed
- Featuring magnetic locking
- Adjustable sealing time and closing time
- No slide cutter
- Counter available as an option

MODEL	450 SA	600 SA	455 SA	605 SA
Sealing capacity	450 mm	600 mm	450 mm	600
Maximum thickness	2 × 150 µm	2 × 150 µm	2 × 150 µm	2 × 150 µm
Seal width	2 mm	2 mm	5 mm	5 mm
Power rating	0.60 kW	0.80 kW	1.20 kW	1.50 kW
Voltage	230 V	230 V	230 V	230 V
Weight	23 kg	27 kg	26 kg	33 kg

ON STAND WITH MECHANICAL FOOT CONTROL

FC

- Supplied with shelf, dispenser, stand and mechanical foot control to trigger the sealing cycle
- Adjustable sealing time
- Cutting capacity: 550 mm

MODEL	605 FC
Sealing capacity	600 mm
Max. thickness	2 × 150 µm
Seal width	5 mm
Power rating	1.5 kW
Voltage	230 V
Weight	30 kg

DOUBLE SEAL WITH ELECTRICAL FOOT CONTROL

FDV

- Vertical work possible
- Machine with double active seal
- Featuring magnetic locking
- Adjustable sealing time and closing time

MODEL	6010 FDV	805 FDV
Sealing capacity	600 mm	800 mm
Max. thickness	2 × 500 µm	2 × 500 µm
Seal width	10 mm	5 mm
Power rating	3 kW	3 kW
Voltage	230 V	230 V
Weight	33 kg	33 kg

HEAT SEALER WITH ELECTRICAL FOOT CONTROL

CFA

- Adjustable sealing time and closing time

DOUBLE SEAL WITH ELECTRICAL FOOT CONTROL

FDA

- Equipped with double active seal
- Featuring magnetic locking
- Adjustable sealing time and closing time

MODEL	455 FDA	605 FDA
Sealing capacity	450 mm	600 mm
Max. thickness	2 × 500 µm	2 × 500 µm
Seal width	5 mm	5 mm
Power rating	2 kW	2.5 kW
Voltage	230 V	230 V
Weight	23 kg	25 kg

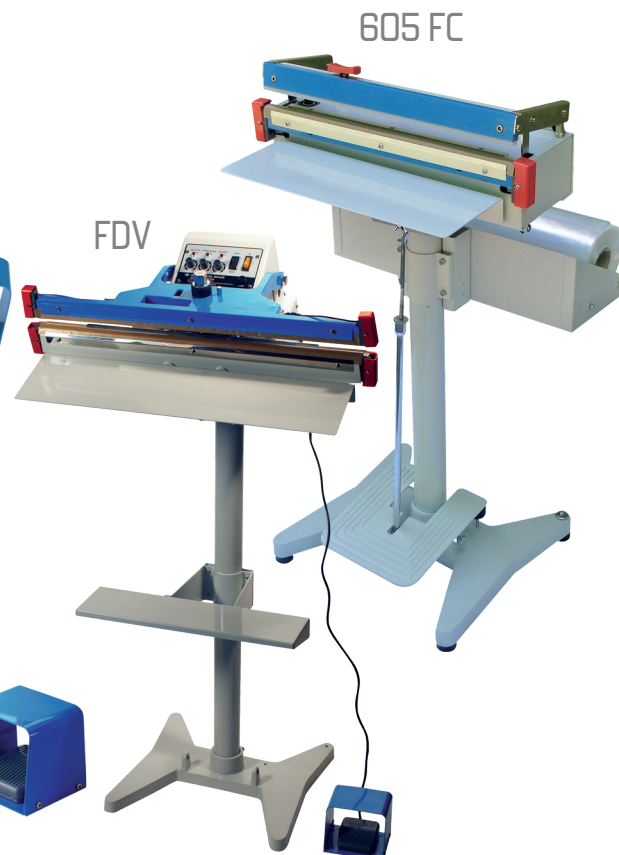
MODEL 400 CFA

Sealing capacity	400 mm
Maximum thickness	2 × 500 µm
Seal width	10 mm
Power rating	520 W
Voltage	230 V
Weight	19 kg

SA

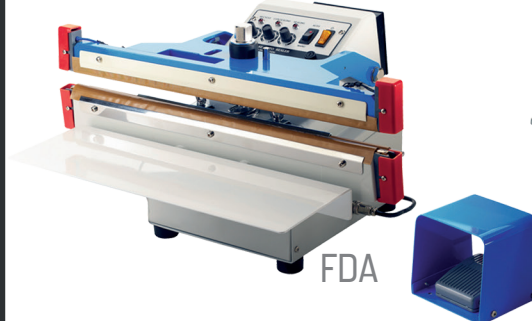


FDV



605 FC

CFA



FDA

SA

For sealing series of plastic and laminated bags

FDA

Machine with double active seal for sealing thick bags

FDV

Machine with double active seal for sealing bags up to 25 kg

CFA

For sealing laminated bags

SEALING PLIERS AND JAWS

VACUUM BAG SEALERS

VA

- Uses two vacuum tubes
- Cycle triggered by electrical foot control
- Featuring pneumatic locking
- Adjustable sealing time and closing time
- Compressor required
- Gas reinjection option
- Voltage: 230 V

MODEL	455 VA	605 VA	6010 VA
Sealing capacity	450 mm	600 mm	600 mm
Maximum thickness	2 × 150 µm	2 × 150 µm	2 × 150 µm
Seal width	5 mm	5 mm	10 mm
Power rating	1.2 kW	1.5 kW	1.9 kW
Weight	23 kg	28 kg	29 kg

PORTABLE PULSE SEALING PLIERS

EAGLE

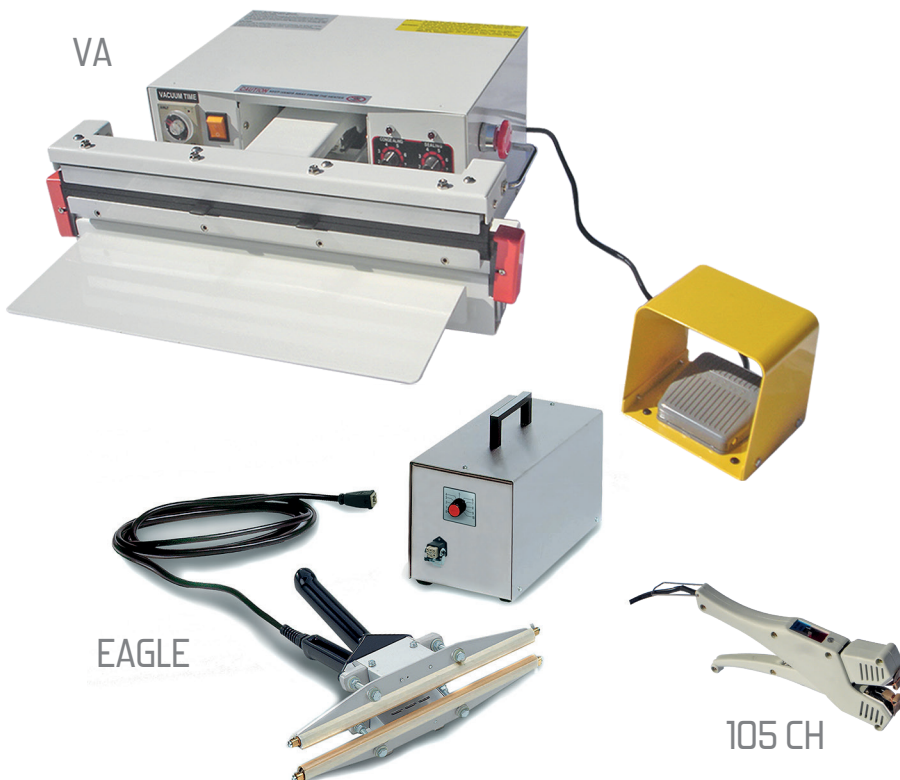
- Pulse sealing
- Cable length: 3.30 metres
- Operates with a generator

MODEL	EAGLE 300	EAGLE 450	EAGLE 630
Sealing capacity	300 mm	450 mm	630 mm
Maximum thickness	2 × 500 µm	2 × 500 µm	2 × 500 µm
Seal width	3 mm	3 mm	3 mm
Power rating	0.18 kW	0.18 kW	0.32 kW
Pliers weight	2.4 kg	2.8 kg	2.9 kg
Voltage	230 V + earth	230 V + earth	230 V + earth

SEALING PLIERS

105 CH

- Spot sealing for PS, PP, PVC, PET and PE blister packs and food trays
- Voltage: 230 V single-phase
- Power rating: 14.5 W
- Weight: 300 g
- Two temperature settings HI: 210°C / LO: 180°C
- Preheating: 2 minutes
- Teflon-coated plier jaws
- Dimensions: 130 × 240 × H 40 mm



ULTRASONIC SEALING PLIERS

305 US

FOR BLISTER PACKS

- Ultrasonic spot sealing
- Sealing length: 4 mm
- Sealing width: 3 mm
- Sealing time adjustable from 0 to 3 seconds
- Ultrasound frequency: 60 kHz
- Power output: 20 W
- Voltage: 230 V
- Pliers: 180 g
- Unit: 900 g

HEAT SEALING JAWS

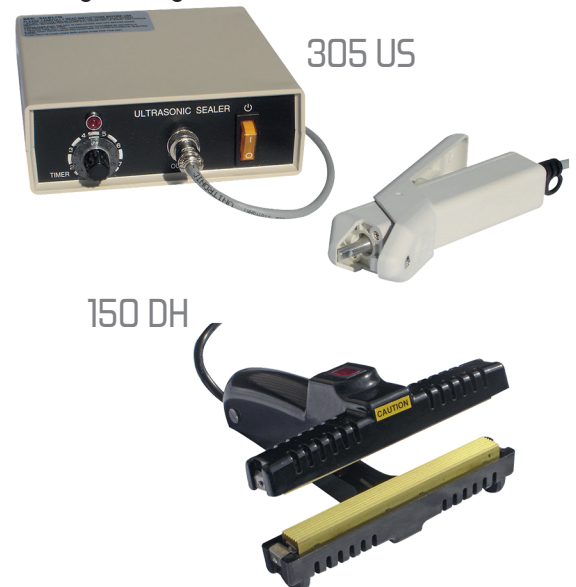
150 HS

- Preheat time: 5 min
- Sealing length: 150 mm
- Sealing width: 2 mm
- Maximum film thickness: 2 × 150 µm
- Voltage: 230 V
- Power rating: 25 W
- Overall dimensions: 190 × 170 × H 70 mm
- Weight: 500 g

HEAT SEALING JAWS

150 DH

- For sealing laminated bags, aluminium, Kraft paper, etc. (no PE bags)
- Preheat time: 5 min
- Sealing length: 150 mm
- Sealing width: 15 mm (ribbed seal)
- Maximum film thickness: 2 × 200 µm
- Voltage: 230 V
- Power rating: 50 W
- Overall dimensions: 190 × 170 × H 70 mm
- Weight: 1 kg



FILM WRAPPING SOLUTIONS

SEALERS WITH HEAT-SHRINK GUN

IP

MODEL	450 IP	800 IP
Sealing bar	450 mm	800 mm
Power rating	350 W	500 W
Weight	7.5 kg	11 kg

ACCESSORIES

HEAT SHRINK GUN

- Two speeds (sold separately)
- Power rating: 1200 W
- Weight: 1.1 kg

L SEALER AND SHRINK TUNNEL

MINI'ST

L sealer: MINI'S

- Sealing frame: 380 x 500 mm
- Adjustable pulse sealing
- Electronic control
- Suitable for packing small and medium series of products
- Adjustable height work surface
- Maximum film width: 450 mm
- Installed power: 0.4 kW
- Overall dimensions: 980 x 400 x H 560 mm
- Voltage: 230 V single-phase
- Weight: 45 kg

Shrink tunnel: MINI'T

- Tunnel clearance: W 320 x H 200 mm
- Variable speed conveyor
- Temperature adjustable from 0 to 180°C
- Silicone bars at 38 mm spacing
- Power rating: 1.6 kW
- Overall dimensions: 640 x 450 x H 440 mm
- Voltage: 230 V single-phase
- Weight: 60 kg

ACCESSORIES

- Silicone bars at 25 mm spacing
- Teflon® mesh belt

L-SEALER

AZUR 50.60

- Sealing frame: 500 x 600 mm
- Adjustable height work surface
- Fitted with braking casters
- Maximum film width: 600 mm
- Max. roll diameter: 250 mm
- Overall dimensions: 1027 x 790 x H 1550 mm (arm raised)
- Voltage: 230 V single-phase
- Power rating: 0.4 kW
- Weight: 50 kg

L-SEALERS WITH BELL HOUSING MISTRAL

- 4 to 6 parts/minute
- Magnetic sealing frame lock
- Sealing + shrinkage in a single step or sealing only
- Control panel with sealing time, temperature shrinkage and bell housing closing time
- Optional trolley on casters

CHARACTERISTICS

MODEL	32.46 STX	42.55 STX	60.84EV	85.130
Sealing frame (mm)	320 x 460	420 x 550	600 x 840	850 x 1300
Max. film width	450 mm	550 mm	700 mm	1200 mm
Power rating	2.1 kW	3 kW	5.5 kW	8 kW
Weight (with trolley)	90 kg	105 kg	180 kg	220 kg
Voltage	230 V	230 V	380 V	380 V
Maximum product height	200 mm	200 mm	250 mm	250 mm

MINI'ST



AZUR 50.60



32.46 STX
42.55 STX



Tunnel sealer range



COUNTER-TOP WRAPPING MACHINES

COUNTER-TOP WRAPPING MACHINE

EMBAL'PRESS

- Sealing capacity: 500 mm
- Pulse sealing
- Clearance beneath arms: 160 mm
- Sealing arm lowered manually
- Power consumption during sealing: 250 W
- Voltage: 230 V single-phase
- Weight: 18 kg

DIMENSIONS

- W 630 × D 550 × H 350 mm
- Tube: 600 × 405 × H 150 mm

ACCESSORIES

- Table stand
- Extra tube
- Film loader

ADVANTAGES

- No preheating time
- Electronic control.
- No unnecessary power consumption on standby
- Odour-free, smoke-free operation

CONSUMABLE

LDPE plastic sleeve
Width: 480 mm
Thickness 20 µm to 50 µm

APPLICATIONS

- Garments
- Shop security

LARGE WRAPPING MACHINE

EMBAL'C

- Sealing capacity: 800 mm
- Pulse sealing
- Clearance beneath arms: 260 mm
- Power consumption during sealing: 120 W
- Voltage: 230 V
- Weight: 40 kg

DIMENSIONS:

- Width: 930 mm
- Depth: 870 mm
- Height: 550 mm
- Tube: 850 × 450 × H 230 mm

ACCESSORIES

- Extra tube
- Roll holder

SMALL WRAPPING MACHINE

EMBAL'COIFF

- Sealing capacity: 300 mm
- Pulse sealing
- Clearance beneath arms: 180 mm
- Sealing arm lowered manually
- Fixed sealing time: 3 sec
- Power consumption during sealing: 35 W
- Voltage: 230 V
- Weight: 10 kg

DIMENSIONS

- Tabletop with tube: 350 × 650 × H 400 mm
- Tube: 600 × 260 × H 50 mm

CONSUMABLE

LDPE plastic sleeve
Width: 300 mm
Thickness: 30 µm

APPLICATIONS

- Towels, bathrobes, combs, brushes, etc.

CONSUMABLE

- LDPE plastic sleeve 750 or 800 mm, thickness: 40 µm

APPLICATIONS

- Duvets, blankets, etc.

15

EMBAL'PRESS



EMBAL'C



EMBAL'COIFF





CCM

MATÉRIELS D'EMBALLAGE

INDUSTRY

WE'VE GOT QUALITY
ALL WRAPPED UP

APPLICATIONS



- Tray sealing
- Shrink filming
- Heat-shrink film packing
- Vacuum packing
- Controlled atmosphere
- Bag sealing solutions

CONSUMABLES



- Vacuum bags
- LDPE sleeves
- Shrink films
- Sealing films
- Trays

38 bis avenue des Sources
69130 ECULLY - France
Tel.: +33 (0)4 37 49 60 49
Fax: +33 (0)4 37 49 09 11
commercial@ccm-emballage.com